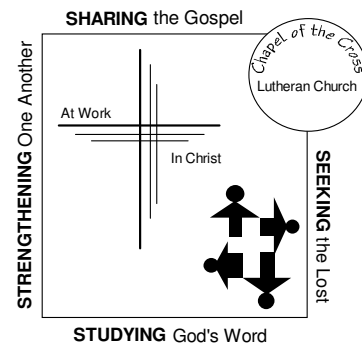


What's Happening at
Chapel of the Cross Lutheran Church
April 1st 2012

TODAY AT CHAPEL

**NEW MEMBERS RECEIVED
IN THE COFFEE SHOPPE at 9am**



THIS WEEK AT CHAPEL
see page 15

WELCOME to Chapel of the Cross!

If you are visiting today, please introduce yourself and be sure to sign our **GUEST REGISTER** located in the Narthex and the **burgundy FELLOWSHIP BOOK** which is passed along the pew during the offering.

COFFEE is served from 9:00-9:30am in the Coffee Shoppe.

A **NURSERY** is available from 9:25am until the end of the late service.

The Nursery is located in the Family Room.

A **FAMILY ROOM** is also available where you may hear and view the service in comfort if you feel your children are restless. The Family Room is located off of the Coffee Shoppe.

Our **LIBRARY** is open from 9:00am-10:45am

Our **OFFICE HOURS** are: Monday through Friday; 9:00am-4:30pm. You may reach us by

PHONE at 636-928-5885 or **FAX** at 636-926-3421 or

EMAIL: office@chapelofthecrosslutheran.org

Don't forget to visit our **website** at: <http://chapelofthecrosslutheran.org>

PASTORAL CARE:

Do you need Pastoral Care or have an emergency requiring pastoral assistance?

Life can sometimes bring struggles our way. If you or a member of your family are experiencing some of life's difficulties, our Pastors are here for you, whether it be personal, family, work or church related struggles.

The Pastors may be reached at the church office 636-928-5885 or at the following numbers:

Pastor Hoehner 636-922-2774; Pastor Uglum 636-577-7539.

Your **Elders** are also available for you. Please see page 4.

PLEASE NOTE: if you are scheduled for tests or surgery, or any need where you would like the Pastor to be present, **please call the church office** so that this may be arranged.

Friendly Reminder: Pastor Hoehner takes Fridays for a day off, and Pastor Uglum takes Thursdays, but of course, our Pastors are always on call for emergencies.

PRAYER REQUESTS: Do you have a specific prayer request? If so, please feel free to fill out a prayer card. Please hand it to the usher prior to the start of service.

OUR BIBLE STUDIES

Sun: **JOIN US FOR ADULT BIBLE CLASSES AT 9:35 A.M.**

Brighten up the gloomy month of February by joining us for one of our Bible studies:

1. **1 Kings – with Pastor Hoehner** in the upper level of the new education wing. This study begins where we left off. David is still the king of Israel, but he is dying. So who will be the next king, and how will he rule God's people? Come and find out and see how God raises up Jedi prophets like Elijah and Elisha to call God's people to a faithful relationship with Him.
2. **Christian Basics with Pastor James** in the upper level of the new education wing. Are you curious to know more about the Christian faith or know someone who is, or do you want to be confirmed in the Lutheran Christian faith? Come study the 6 basic teachings of God's love, salvation, and purpose for your life.
3. **The Women's Beth Moore Study** of the Book of Acts led by Anita Clausing in the lower level of the new education wing.

High School Youth meet in Daniel's Den with Chris and Stephanie Kollmann. All our youth are welcomed and encouraged to bring a friend.

Children: We have an awesome **Sunday School** staff which provides loving, biblical, Christ-centered teaching for all ages. Our Sunday School begins at age three and goes through 8th grade.

Note: All Sunday classes will begin promptly at 9:35 a.m.

Parents can drop off their children to their Sunday School Teacher in the Gymnasium at 9:25 a.m. The teachers will make sure they get to class. Parents are also welcome to stay for the opening if they wish. The Cherub Choir and Handbells will continue to meet immediately after the opening.

Mon: Little Lambs' Story Hour for Chapel's preschool aged youth will be held on the **second Monday of each month (except in April) during the school year. We will meet at 9:30 am in the preschool classroom.** We will learn about God's love for us as we read Bible stories based on Adam, Adam, What Do You See? There will be a craft and a snack, as well as time to visit Chapel's Andrew Pelley Library. Contact Liz Riedemann (636-447-2427 or riedemann5@charter.net) if you and your child are planning to attend the Story Hour.

Tues: Ladies' Tuesday Morning Bible Study: Please join us at 9:30am on the 1st & 4th Tues. The goal is that through in-depth personal and group study of scripture we will grow in our personal faith in Jesus Christ, enjoy fellowship with members of His body, and reach out in love to others in witness and service. If you have questions please **contact Linda Little at 636-272-2701.**

Weds: Early Morning Bible Study with Bob VanGilder at 6:30am at Bob Evans on Mid Rivers Mall Dr near the Mall. Our current topic is 'A Study of Ephesians'. For more information, call Bob VanGilder 314-650-2053.

Sat: Men's Bible Study We meet the 2nd & 4th Saturdays of the month from 7:30am – 9:00am in Room 13 on the lower level. A light breakfast is served at 7:30am with our study beginning at 8:00am. Any questions? Call Butch Schleicher at 946-3681. NOTE: On Feb 11 we will begin a new study on 1 & 2 Thessalonians where we will learn about the power of the Word of God; the importance of living a God-pleasing life; and the reason why we are faithful to the Bible's teachings

DAILY BIBLE READINGS for 2 yr. Reading Plan

(may be started at any time)

"Today's Light" Bible is available from CPH. Daily readings are accompanied by study notes.

APR 2:	DEUTERONOMY 1	APR 5:	DEUTERONOMY 4
APR 3:	DEUTERONOMY 2	APR 6:	DEUTERONOMY 5
APR 4:	DEUTERONOMY 3	APR 7:	DEUTERONOMY 6

Chapel's ELDERS are there for You

As a member of Chapel of the Cross, you have a person working for you whose duties are to "Be shepherds of God's flock that is under your care" (1 Peter 5:2) If you have questions, concerns, or if you or someone you love are simply having difficulties and aren't sure if you need pastoral care, please pick up the phone and call your elder.

If your last name begins with:	Your Elder is:	Contact Number:
C	Chris Becker	636-288-3664
G, T-Tho	Doug Broste	636-734-2077
A, R	Wyatt Gross	636-459-5496
S-She	Dan Heidelmeyer	636-240-1951
H	Allen Herbst	636-240-4527
Ti-Tu, W	Martin Koeneman	636-916-3507
F, I, N, O, Q	Dan Kroehnke	636-397-0860
Shr-Sw	John Lomax	636-695-3036
M-Men, Z	Richard Minasian	636-447-5354
B-Be, D	Dave Riedemann	636-447-2427
K, X, Y	Doug Seifert	636-278-2782
Bi-By	Duane Theilen	636-387-3683
J, P, U	Bob VanGilder	314-650-2053
E, Mey-My	Doug White	314-541-8500
L, V	Justin Yockey	314-973-6618

The Elder Chairman is Wade McKee 636-928-3699.

CHAPEL'S FIRST FRUITS OF FAITH

Income: Weekend of Mar 25, 2012	This week	Yr to Date	'11 YTD
Budgeted Income Required:	\$ 13,298.08	\$ 172,875.04	—
Actual Budget Funds:	\$ 12,850.47	\$ 177,177.92	\$ 153,657.94
Electronic Giving (included in line above)	\$ 1,630.00	\$ 7,694.00	
Abundant Giving:	\$ 322.50	\$ 14,700.50	
Attendance: Week 13	'12 Actual 523	'12 Wkly Ave 519	'11 Actual 474
			'11 Wkly Ave 520

"And they did not do as we expected, but they gave themselves first to the Lord and then to us in keeping with God's will."
2 Corinthians 8:5

CHAPEL YOUTH HAPPENINGS:

SR HIGH:

WEDS NIGHT FELLOWSHIP 6:00PM-7:30PM

SUNDAYS 9:30AM – IN DANIEL’S DEN

JR. HIGH :

CONFIRMATION!

Meets again on Wed Apr 11th

6th, 7th, and 8th Graders: Meet at 6:20pm – go straight to class.

YOUTH ACTIVITIES FOR APRIL & MAY:

Have you ever wanted to be a contestant on a reality TV show? **On Friday April 20th** from 6:00-10:30pm, the youth will have a Night of Reality. This youth event will give the youth a chance to participate in their favorite reality TV shows! The youth will split into teams to see who is "in or out." Teams will be asked to compete in shows such as: Minute to Win It, Project Runway, Chopped, and Are you Smarter than a Fifth Grader, with the tie breaker round being American Idol. Come and join us to see who is going to be the next rising reality star, and bring friends! The cost is \$5 for dinner and supplies. As always, parent chaperones are welcome to join the fun. Please let Chris or Stephanie know if you are interested. Judging positions still available!

May's youth event will be an Amazing all day event! On Saturday May 12th, The Amazing Race is coming to the Chapel of the Cross youth group! Eighth Graders are also welcome for this event! We will travel to Forest Park in a "Race around the Park." Youth will be in groups of 3 or 4 and they will face detours, intersections, and road blocks as they race to be Team Number One! Lunch, dinner, snacks and drinks will be provided at the pit stops. The cost will be \$10-15 per person. Bring friends! The race will last from approximately 8:30 am - 6:30 pm, including travel time to and from Forest Park. The first team to reach the finish line will get their names on a trophy which will be kept in the youth room. Prizes will be given to teams that bring friends!

WORSHIP SCHEDULE FOR HOLY WEEK AND EASTER

PALM SUNDAY, Apr 1

Communion Service at
8:00AM & 10:45AM

MAUNDY THURSDAY, Apr 5

7:00PM Communion Service

GOOD FRIDAY, Apr 6

Worship Service at
11:00AM & 7:00PM

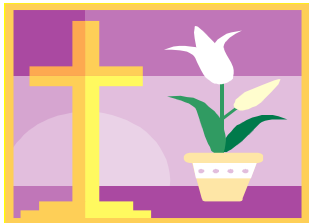
EASTER SUNDAY, Apr 8

Sunrise Service at 6:00AM
*(Holy Communion will still be celebrated
but in a somewhat simpler style of
service)*

Holy Communion will also be
celebrated at 8:00AM & 10:45AM

Chapel's Youth will serve breakfast from
7:00AM-10:30AM

(Proceeds from the breakfast will go
towards this year's Mission Trip)



OTHER CHAPEL ANNOUNCEMENTS

NEW MEMBERS RECEIVED TODAY, April 1st

New Members to Chapel will be received today, SUNDAY, April 1st at the 10:45am service. All those who are planning on becoming Members, would you please be sure to let the Church Office know. (928-5885) Thank You!!

ALL Members are invited to our **“Donuts, Juice & Coffee Reception”**

which will be held today, Sunday, April 1st at
9:00am in the Coffee Shoppe with Bible Study
to follow at 9:35am

Working on your taxes? CONTRIBUTION STATEMENTS are in the Coffee Shoppe

DEADLINE FOR WHAT'S HAPPENING ARTICLES FOR EASTER:

Due to Holy Week being a short work week, we will need you to submit your articles by Noon on Monday, April 2nd for inclusion in the Easter bulletin. Thank you.

THANK YOU TO CHAPEL & MEALS OF COMFORT

Dear Chapel Family, I would like to personally thank you for your support. Thanks to your generosity, I recently received a future church worker scholarship. Words cannot express how grateful I am to all of you. I also appreciate all the prayers and help you have given me over my years at Concordia University Nebraska. I am graduating on May, 5 with my Bachelor's degree in Elementary Education and a Lutheran Teacher's degree. I will never forget your kindness and willingness to help me achieve this goal.

In Christ,
Sarah Kutschkau

To all the members of Meals of Comfort: Thank you so much for all of the wonderful work you do to help when we need a meal for a funeral. You all answer the call with such enthusiasm and support. To each of you a big Thank You and a hug!

Linda Wilcox

REMEMBER CHAPEL SCRIP FOR EASTER!!!

Chapel Scrip has a wide variety of cards to add to your Easter baskets. We also have many restaurant cards if you are going out to eat for Easter, or grocery store cards for all your ingredients for that special meal!

If you are a Schnucks shopper, we have free e-scrip cards to use anytime you get your groceries there. You just present your card before you check out, and they send us a check every month for a percentage of what our members spend!

All proceeds from the sale of gift cards, and from the Schnucks e-scrip cards go to support Chapel's Future Church Workers. Stop by our booth in the Coffee Shoppe to see what we offer. Thank you all for your support!!!

ATTENTION ALTAR GUILD MEMBERS:

Please remember the schedule for **Maundy Thursday, April 5th**. As most of you know we clear the altar at the conclusion of the service on Maundy Thursday. We will congregate in the narthex and proceed down the center aisle and as the items on the altar are removed they will be taken to the sacristy. The number of times we will need to return will depend on the number of altar guild members present. Please wear a white blouse/sweater and dark skirt/slacks for this service as we have in the past. If you have a ribbon Cross please wear it, or a cross of any kind. If you have any questions feel free to contact me. Thank you for being an altar guild member.

PARENTS AND CHURCH MEMBERS:

On Saturday May 12th in Forest Park the youth will have an Amazing Race (based off the reality TV show). This is truly going to be an Amazing Race, but we will need Your help to make it great. We are looking for volunteers to help for the full day, or just half of the race. You will be given instructions, and it will be fun and easy.

We are also looking for donations of bottled water and Gatorade (size 20oz or less), granola bars, small bags of candy or sunflower seeds (no chocolate please), canned fruit, tuna pouches, and packets of powdered drink mixes. There will be a yellow box for these items in the Narthex. We greatly appreciate your help to make this race truly amazing! If you have any questions, or would like to help, please let Chris or Stephanie know (kollmann@csl.edu or 914 325-7145)

A GREENER APPROACH TO GIVING:

Churches, because of their heavy weekly check volumes, need to embrace electronic giving as a way to automate contributions. Electronic giving in all its forms provides convenience for frequent check writers and donation consistency for churches.

A less frequently discussed benefit of electronic giving is its positive impact on the environment. An enormous amount of natural resources are consumed in the production, transportation, processing and disposal of paper checks. That's why paying bills electronically always ranks high on any list of actions an individual can take to improve the environment.

As you consider the payment method you use to make your regular offering, we hope you will consider the unique connection between financial stewardship and environmental stewardship. Visit our website at: chapelofthecrosslutheran.org. Scroll down to the lower left side of our home page and click on the "online giving" button for more information or to sign up. Don't have access to the Internet? Contact the church office 636.928.5885

NEXT CULVER'S NIGHT

Mon APR 2

On Monday April 2nd, the youth will be hosting another Culver's night as a fundraiser for our mission trip. Please come out and support the youth if you are able! We'll be at the Culver's located at 2750 Muegge Rd, St Charles from 5-10pm.

LWML SPRING ZONE RALLY in Troy

APR 14

Deadline to register is TODAY, APR 1

All ladies are invited to the LWML Spring Rally on April 14th to be held at Trinity Lutheran Church in Troy. Info and directions are on the bulletin board in the Coffee Shoppe.

LWML CHAPEL CIRCLE MEETING

APR 17

The brown bag lunch hour will be hosted by Jo Scheer and Judy Wiegand. Jo Scheer will also provide the devotion. Our program will be presented by our guest speaker, Mrs. Shauna Thompson. Please join us as we will be learning about the *"Women of India"*. **We will meet in the New Education Wing, in Room A** for lunch at noon followed by our guest speaker and meeting at 1:00 p.m.

KEENager News

APR 19

On Thursday, April 19th at 9 a.m. we will take a trip to visit the Alive exhibit of Marianist Brother Mel Meyer's work. After lunch we will tour the Lutheran International Center at 1 p.m.

As always, anyone 55 or older may join us for fun and fellowship!
Call Paul Ludy @ 636-278-3881 with questions or to get on the list. Thanks.

OTHER ANNOUNCEMENTS

(SEE BULLETIN BOARD FOR FURTHER INFO ON ANY EMPLOYMENT OPPORTUNITIES/AREA EVENTS)

DEAR CHAPEL FAMILY

Please could we ask you to notify the church office of
ANY EMPLOYMENT OPPORTUNITES
that you hear of so that we may share this information with our members. Thank you.

EMPLOYMENT OPPORTUNITY: Lutheran High School is currently accepting applications for the position of head boys varsity basketball coach. Any interested individuals should submit the following to the Athletic Director, Doug Kuhlmann:

1. A letter of interest, with a brief statement of your coaching philosophy.
2. Resume of no more than three pages, which also includes your teaching and/or coaching chronology.
3. Two letters of recommendation specifically noting leadership strengths and coaching experience.

Questions? Contact Doug Kuhlmann @ DKuhlmann@lhssc.org or (314) 497-3014

DID YOU KNOW ???

PRAYER CHAIN: Do you wish to have the Prayer Chain started for yourself or a loved one? Please call Marion Harris at 636-922-1278 or Ruth Koeneman at 636-916-3507. You are always welcome to join us as a Prayer Partner of the Prayer Chain.

MEALS OF LOVE: Are you, or someone you know, in need of a meal due to sickness or just coming home from the hospital. Please call Kim Harnagel at 939-6927 to arrange for a **Meal of Love** to be delivered to your home. **This is not affiliated or associated with “Meals on Wheels”.** “Meals of Love” are members of Chapel helping out fellow members. They provide up to four meals per illness/occurrence. If you wish to help make meals, please also call Kim.

Memorial Cards, Portals of Prayer & Prayer Booklets are located in the Narthex in the Info Rack.

Mail Tubs are located on the credenza in the hall—outside the offices.

Application for Facility Use forms are located in the Mail Tubs. Please complete and submit to the Church Office when making your request.

Lost & Found is in a box in the cloak room to the left of the narthex. Items will be kept for one month, and if not claimed, will be donated to Goodwill. Thanks for helping to keep our church clutter-free.

CDs of our Sunday Service are available upon request – please call church office.

Doodle Bags are hanging on the wood post in the narthex and are for your child's enjoyment during the church service. **PARENTS:** Please see that the bags get returned to the blue tub in the narthex at the end of the worship service. Thank you!

Want a ride to church?? Chapel's bus service is up & running!! Please call the church office (928-5885) by 11am on the Thursday prior to the Sunday that you wish to be driven to church. **If you are an “on-going” rider & will be going out of town,** please let us know that you will not need to be picked up. Chapel is blessed to be able to provide this special ministry.

Pink Prayer Folder – We Need Your Help!! Please review the names of your family members and friends listed in the pink prayer folder and kindly inform the church office of any changes. If at any time a name is removed and you know that person is in need of continued prayers, please be sure to let us know. Thanks for you help.

‘Chapel Scrip’!! Need a gift card?? We offer gift cards for groceries, restaurants, clothing, home improvements, travel, electronics and much more. Stop by our counter in the Coffee Shoppe to see the great selection of cards available for you to buy today, or you can use our convenient order form to order as needed. If you can't be there on a Sunday morning but would like to order gift cards, please feel free to call us (Roger and Lisa Kutschkau) at (636) 926-0986. All proceeds go to help Chapel's Future Church Workers!!

Please submit your articles for **WHAT'S HAPPENING BY 12 NOON ON WEDS**

Send to office@chapelofthecrosslutheran.org

THIS WEEK AT CHAPEL

<p>PALM SUNDAY: 1 8:00AM Communion Service 9:00AM Coffee in Coffee Shoppe 9:25AM Opening Devotion / FH 9:35AM Sun. Sch/Bible Studies 10:45AM Communion Service New Mbrs Rec'd '12 6:00PM AI-A Rm12</p>	<p>MONDAY 2 12:00PM Keenager Bowling 5:30PM VB in FH (BF) 7:00PM Communion Service Culver's Night</p>	<p>ELECTION DAY '12 3 9:30AM Ladies' Tues AM Bible Study Rm12 10:00AM Card Ministry Rm 11 7:00PM Chapel Bells 7:00PM Elders ConfRm 7:30PM Zumba Fitness in Gym</p>
<p>WEDNESDAY 4 6:30AM Bible Study at Bob Evans 7:30PM VB/FH (BF)</p>	<p>MAUNDY THURSDAY 5 7:00PM Communion Service</p>	<p>GOOD FRIDAY 6 11:00AM Worship Service 7:00PM Tenebrae Service</p>
<p>SATURDAY: 7 9:00AM Zumba Fitness in Gym 9:45AM AA Rm13 (10:15-11:15) Set up for Easter Breakfast</p>	<p>EASTER SUNDAY: 8 6:00AM Sunrise Service w/ Communion 8:00AM Communion Service Easter Breakfast 7:00AM - 10:30AM 10:45AM Communion Service</p>	<div style="border: 1px solid black; padding: 10px;"> <p>KEY: CS-Coffee Shoppe FH-Fellowship Hall/ Gym LLL-Lower Level Lobby S-Sanctuary DD-Daniel's Den</p> </div>

WORSHIP ASSISTANTS

WEEK Beginning Sunday, April 1		
GREETERS:	8:00	Gus & Pearl Vogelsang
	10:45	Howard & Jennifer Woodruff
ACOLYTES:	8:00	Tiffany Rhodes Elena Oberneufemann
	10:45	Mehan Burge Kyle Addie
NURSERY:		Melanie Biggers
USHERS:	8:00	Bill Hankins*, Beverly Hankins, Gary Oberneufemann, Kathy Collins, Rich & Janet Minasian
	10:45	Kim Woodworth*, Bill Clemens, Al Schuettpelz, Tim Meyer, Bob Carter, Randy Goltz and Douglas Broste
	10:45 Subs	Linda & Ralph Williams
ASSISTING WITH COMMUNION	8:00	Elders Schleicher , Theilen, Gross
	10:45	Elders Riedemann , Herbst, Heidemeyer
	Mon	Elders Broste
ELDER ON DUTY:		Duane Theilen
TRUSTEE:		Tim Weber
COUNTERS:		Duane & Debbie Theilen, Rich & Janet Minasian, John & Joy Lomax

WEEK Beginning Sunday, April 8		
GREETERS:	8:00	Ed & Shirley Mabuce
	10:45	Ruby Kramer & Judy Herbst
ACOLYTES:	8:00	Cora Harms Lydia Harms
	10:45	Travis Jones Jimmy Clemens
NURSERY:		Karrin Nettles
USHERS:	8:00	Steve Junkel*, Butch Schleicher, John Harnagel, Bill Clark, Bob VanGilder, Rodney Bloese, David Lah
	10:45	Bill Miller*, Dan Kroehnke, Jay Sayers, Mike Napolitano, Dave LaRussa, Owen Napolitano
	10:45 Subs	Linda & Ralph Williams
ASSISTING WITH COMMUNION	6:00	Elders McKee , VanGilder
	8:00	Elders Koeneman , Minasian, Gross, Theilen, White
	10:45	Elders Becker , Heidemeyer, Kroehnke, Seifert, Lomax
	Mon	No Worship Service
ELDER ON DUTY:		Rich Minasian
TRUSTEE:		Roger Kutschkau
COUNTERS:		Bob & Jacquie VanGilder Stephanie VanGilder MaryAnn Ronan, Jack Muckey

SERVICE 8:00
COORD: 10:45 Ruby Kramer

ALTAR GUILD for Apr: Dianne Nelson
 Terri Scheer
 Kathleen Dwyer

Mon: Susan Meyer, Ruth Conant

COFFEE HOSTESS for Apr: Bob & Jacquie VanGilder

BULLETIN FOLDERS: Bob Renken, Ruby Kramer,
 Betty Choate, Diane Klos,
 Kathy Mortenson, Marlene Singleton, Gladys Smart,
 Phyllis Richoz, Bev Cossey