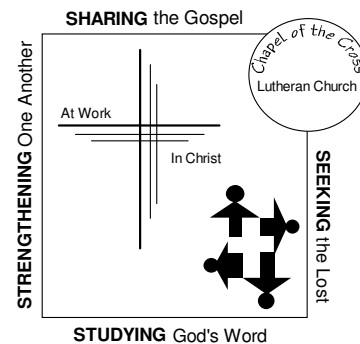


What's Happening at  
Chapel of the Cross Lutheran Church  
March 25<sup>th</sup> 2012

**TODAY AT CHAPEL**

**Feed My Sheep**

**New Member Orientation in Rm B**



**THIS WEEK AT CHAPEL**

see page 15

**WELCOME to Chapel of the Cross!**

If you are visiting today, please introduce yourself and be sure to sign our **GUEST REGISTER** located in the Narthex and the **burgundy FELLOWSHIP BOOK** which is passed along the pew during the offering.

**COFFEE** is served from 9:00-9:30am in the Coffee Shoppe.

A **NURSERY** is available from 9:25am until the end of the late service.

The Nursery is located in the Family Room.

A **FAMILY ROOM** is also available where you may hear and view the service in comfort if you feel your children are restless. The Family Room is located off of the Coffee Shoppe.

Our **LIBRARY** is open from 9:00am-10:45am

Our **OFFICE HOURS** are: Monday through Friday; 9:00am-4:30pm. You may reach us by

**PHONE** at 636-928-5885 or **FAX** at 636-926-3421 or

**EMAIL:** [office@chapelofthecrosslutheran.org](mailto:office@chapelofthecrosslutheran.org)

Don't forget to visit our **website** at: <http://chapelofthecrosslutheran.org>

**PASTORAL CARE:**

**Do you need Pastoral Care or have an emergency requiring pastoral assistance?**

Life can sometimes bring struggles our way. If you or a member of your family are experiencing some of life's difficulties, our Pastors are here for you, whether it be personal, family, work or church related struggles.

The Pastors may be reached at the church office 636-928-5885 or at the following numbers:

Pastor Hoehner 636-922-2774; Pastor Uglum 636-577-7539.

Your **Elders** are also available for you. Please see page 4.

PLEASE NOTE: if you are scheduled for tests or surgery, or any need where you would like the Pastor to be present, **please call the church office** so that this may be arranged.

**Friendly Reminder:** Pastor Hoehner takes Fridays for a day off, and Pastor Uglum takes Thursdays, but of course, our Pastors are always on call for emergencies.

**PRAYER REQUESTS:** Do you have a specific prayer request? If so, please feel free to fill out a prayer card. Please hand it to the usher prior to the start of service.

## OUR BIBLE STUDIES

### Sun: **JOIN US FOR ADULT BIBLE CLASSES AT 9:35 A.M.**

Brighten up the gloomy month of February by joining us for one of our Bible studies:

1. **1 Kings – with Pastor Hoehner** in the upper level of the new education wing. This study begins where we left off. David is still the king of Israel, but he is dying. So who will be the next king, and how will he rule God's people? Come and find out and see how God raises up Jedi prophets like Elijah and Elisha to call God's people to a faithful relationship with Him.
2. **Christian Basics with Pastor James** in the upper level of the new education wing. Are you curious to know more about the Christian faith or know someone who is, or do you want to be confirmed in the Lutheran Christian faith? Come study the 6 basic teachings of God's love, salvation, and purpose for your life.
3. **The Women's Beth Moore Study** of the Book of Acts led by Anita Clausing in the lower level of the new education wing.

**High School Youth** meet in Daniel's Den with Chris and Stephanie Kollmann. All our youth are welcomed and encouraged to bring a friend.

**Children:** We have an awesome **Sunday School** staff which provides loving, biblical, Christ-centered teaching for all ages. Our Sunday School begins at age three and goes through 8<sup>th</sup> grade.

**Note: All Sunday classes will begin promptly at 9:35 a.m.**

Parents can drop off their children to their Sunday School Teacher in the Gymnasium at 9:25 a.m. The teachers will make sure they get to class. Parents are also welcome to stay for the opening if they wish. The Cherub Choir and Handbells will continue to meet immediately after the opening.

**Mon: Little Lambs' Story Hour** for Chapel's preschool aged youth will be held on the **second Monday of each month (except in April) during the school year. We will meet at 9:30 am in the preschool classroom.** We will learn about God's love for us as we read Bible stories based on Adam, Adam, What Do You See? There will be a craft and a snack, as well as time to visit Chapel's Andrew Pelley Library. Contact Liz Riedemann (636-447-2427 or riedemann5@charter.net) if you and your child are planning to attend the Story Hour.

**Tues: Ladies' Tuesday Morning Bible Study:** Please join us at 9:30am on the 1st & 4th Tues. The goal is that through in-depth personal and group study of scripture we will grow in our personal faith in Jesus Christ, enjoy fellowship with members of His body, and reach out in love to others in witness and service. If you have questions please **contact Linda Little at 636-272-2701**.

**Weds: Early Morning Bible Study** with Bob VanGilder at 6:30am at Bob Evans on Mid Rivers Mall Dr near the Mall. Our current topic is 'A Study of Ephesians'. For more information, call Bob VanGilder 314-650-2053.

## MID-WEEK LENTEN WORSHIP

Join us on Wednesdays when we will gather for worship under the theme "Voices." In this series we will hear voices of our culture in dialogue with the voices from our confession of faith.

As always we gather for Soup Supper at 6p.m. and then the hymn sing at 6:45 p.m. and then a 30 minute devotional worship at 7p.m. It is a great time to get re-connected to your Savior, or to connect a friend or family member to Jesus so invite your friends and family to join us!

You are invited to bring a soup or dessert to share.

The host groups for our Lent Soup Suppers (in charge of set-up and kitchen) are as follows—Thank you for your service!:

March 28     ~~Greeters~~     Church Ushers

**Sat: Men's Bible Study** We meet the 2<sup>nd</sup> & 4<sup>th</sup> Saturdays of the month from 7:30am – 9:00am in Room 13 on the lower level. A light breakfast is served at 7:30am with our study beginning at 8:00am. Any questions? Call Butch Schleicher at 946-3681. NOTE: On Feb 11 we will begin a new study on 1 & 2 Thessalonians where we will learn about the power of the Word of God; the importance of living a God-pleasing life; and the reason why we are faithful to the Bible's teachings

**DAILY BIBLE READINGS for 2 yr. Reading Plan**

*(may be started at any time)*

*"Today's Light"* Bible is available from CPH. Daily readings are accompanied by study notes.

MAR 26:	NUMBERS 22-25	MAR 29:	NUMBERS 31-54
MAR 27:	NUMBERS 26-27	MAR 30:	NUMBERS 32-34
MAR 28:	NUMBERS 28-30	MAR 31:	NUMBERS 35-36

**Chapel's ELDERS are there for You**

As a member of Chapel of the Cross, you have a person working for you whose duties are to "Be shepherds of God's flock that is under your care" (1 Peter 5:2) If you have questions, concerns, or if you or someone you love are simply having difficulties and aren't sure if you need pastoral care, please pick up the phone and call your elder.

If your last name begins with:	Your Elder is:	Contact Number:
C	Chris Becker	636-288-3664
G, T-Tho	Doug Broste	636-734-2077
A, R	Wyatt Gross	636-459-5496
S-She	Dan HeideImeyer	636-240-1951
H	Allen Herbst	636-240-4527
Ti-Tu, W	Martin Koeneman	636-916-3507
F, I, N, O, Q	Dan Kroehnke	636-397-0860
Shr-Sw	John Lomax	636-695-3036
M-Men, Z	Richard Minasian	636-447-5354
B-Be, D	Dave Riedemann	636-447-2427
K, X, Y	Doug Seifert	636-278-2782
Bi-By	Duane Theilen	636-387-3683
J, P, U	Bob VanGilder	314-650-2053
E, Mey-My	Doug White	314-541-8500
L, V	Justin Yockey	314-973-6618

The Elder Chairman is Wade McKee 636-928-3699.

**CHAPEL'S FIRST FRUITS OF FAITH**

<b>Income: Weekend of Mar 18, 2012</b>	<b>This week</b>	<b>Yr to Date</b>	<b>'11 YTD</b>
Budgeted Income Required:	\$ 13,298.08	\$ 159,576.96	—
<b>Actual Budget Funds:</b>	\$ 15,810.50	\$ 164,327.45	\$ 140,347.19
Electronic Giving (included in line above)	\$ 1,521.00	\$ 6,064.00	
<b>Abundant Giving:</b>	\$ 3112.50	\$ 14,378.00	
<b>Attendance: Week 12</b>	<b>'12 Actual</b> 586	<b>'12 Wkly Ave</b> 519	<b>'11 Actual</b> 542
			<b>'11 Wkly Ave</b> 524

*"And they did not do as we expected, but they gave themselves first to the Lord and then to us in keeping with God's will."*  
2 Corinthians 8:5

## **CHAPEL YOUTH HAPPENINGS:**

**SR HIGH:**

**WEDS NIGHT FELLOWSHIP 6:00PM-7:30PM**

**SUNDAYS 9:30AM – IN DANIEL’S DEN**

### **YOUTH GOING TO CITY MUSEUM**

On Saturday March 31st, the youth will be going to the City Museum in downtown St. Louis. Explore enchanted caves, climb into treetops, run around Monstro-City, view the world's largest pencil, and so much more! The cost is \$13. We will meet at church at noon and be back around 5:00 pm. We are still looking for chaperones/drivers so if you are interested, please let Chris or Stephanie know (914-325-7145).

### **2012 HIGH SCHOOL GRADUATING SENIORS**

How do you feel about the color orange? Is orange your color? If so, consider being a part of the **Orange Nation** and .....serving at the 2013 NYG in San Antonio? See Liz Riedemann for details! (636-447-2427 or riedemann5@charter.net)

**JR. HIGH :**

**CONFIRMATION!**

**Meets again on Wed Apr 11<sup>th</sup>**

**6<sup>th</sup>, 7<sup>th</sup>, and 8<sup>th</sup> Graders: Meet at 6:20pm** — go straight to class.

### **YOUTH ACTIVITIES FOR APRIL & MAY:**

Our youth event for April will be a Night of Reality (date and time TBA). Have you ever wanted to be a contestant on a reality TV show? This youth event will give the youth a chance to participate in their favorite reality TV shows! The youth will split into teams to see who is "in or out." Teams will be asked to compete in shows such as: Minute to Win It, Project Runway, Chopped, Are you Smarter than a Fifth Grader, with the tie breaker round being American Idol. Come and join us to see who is going to be the next rising reality star, and bring friends! The cost is \$5 for dinner and supplies. As always, parent chaperones are welcome to join the fun. Please let Chris or Stephanie know if you are interested. Judging positions still available!

May's youth event will be Saturday May 12th, when The Amazing Race comes to the Chapel of the Cross youth group. We will travel to Forest Park in a "Race around the Park." Youth will be in groups of 3 or 4 and they will face detours, intersections, and road blocks as they race to be team number 1. Lunch, dinner, snacks and drinks will be provided at the pit stops. The cost will be \$10-15 per person. Bring friends! The race will last from approximately 8:30 am - 6:30 pm, including travel time to and from Forest Park. The first team to reach the finish line will get their names on a trophy which will be kept in the youth room. Prizes will be given to teams that bring friends!

## WORSHIP SCHEDULE FOR LENT, HOLY WEEK AND EASTER

7:00PM MID-WEEK LENT SERVICE  
Mar 28

Soup Supper 6:00PM—Hymn Sing 6:45PM

**PALM SUNDAY, Apr 1**

Communion Service at  
8:00AM & 10:45AM

**MAUNDY THURSDAY, Apr 5**

7:00PM Communion Service

**GOOD FRIDAY, Apr 6**

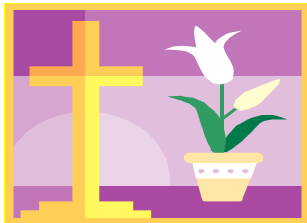
Worship Service at  
11:00AM & 7:00PM

**EASTER SUNDAY, Apr 8**

Sunrise Service at 6:00AM  
*(Holy Communion will still be celebrated  
but in a somewhat simpler style of  
service)*

Holy Communion will also be  
celebrated at 8:00AM & 10:45AM

Chapel's Youth will serve breakfast from  
7:00AM-10:30AM



(Proceeds  
from the  
breakfast will  
go towards  
this year's  
Mission Trip)

## OTHER CHAPEL ANNOUNCEMENTS

### **NEW MEMBER ORIENTATION TODAY, March 25<sup>th</sup>**

Orientation will be held on SUNDAY, March 25<sup>th</sup> at 9:35am. The Orientation is for those who are transferring to Chapel of the Cross from other congregations, those who are reaffirming their faith and those who have attended the recent Christian Basics class.

### **NEW MEMBERS RECEIVED April 1<sup>st</sup>**

New Members to Chapel will be received on SUNDAY, April 1<sup>st</sup> at the 10:45am services. **All those who are planning on becoming Members, would you please be sure to let the Church Office know.** (928-5885) Thank You!!

### ALL Members are invited to our **“Donuts, Juice & Coffee Reception”**

which will be held on Sunday, April 1<sup>st</sup> at  
9:00am in the Coffee Shoppe with Bible Study  
to follow at 9:35am

### **Working on your taxes? CONTRIBUTION STATEMENTS are in the Coffee Shoppe**

## **DEADLINE FOR WHAT'S HAPPENING ARTICLES FOR EASTER:**

Due to Holy Week being a short work week, we will need you to submit your articles by Noon on Monday, April 2nd for inclusion in the Easter bulletin. Thank you.

## **ATTENTION ALTAR GUILD MEMBERS:**

Please remember the schedule for Maundy Thursday, April 15th. As most of you know we clear the altar at the conclusion of the service on Maundy Thursday. We will congregate in the narthex and proceed down the center aisle and as the items on the altar are removed they will be taken to the sacristy. The number of times we will need to return will depend on the number of altar guild members present. Please wear a white blouse/sweater and dark skirt/slacks for this service as we have in the past. If you have a ribbon Cross please wear it, or a cross of any kind. If you have any questions feel free to contact me. Thank you for being an altar guild member.

## **PARENTS AND CHURCH MEMBERS:**

May's Youth event is truly going to be an Amazing Race, but we will need Your help to make it great. We are looking for volunteers to help for the full day, or just half of the race. You will be given instructions, and it will be fun and easy. We are also looking for donations of water & Gatorade. There will be a box for these items in the Narthex. We greatly appreciate your help to make this race truly amazing! If you have any questions, or would like to help, please let Chris or Stephanie know (kollmann@csl.edu or 914 325-7145)

## **ATTENTION WACKY TACKERS:**

We meet for quilting on the last Wednesday of March, which will be March 28th at 9:30am on lower level.

## **ATTENTION THRIVENT MEMBERS:**

Thrivent members going to the Membership Meeting at the Fox on Thursday, April 19, March 25 is the last day to sign up to take the bus. The chapter needs to give the bus company a head count. Advantages to taking the bus: no driving, no parking problems, and save on gas, and good fellowship on the way to and from the Fox.

March 30 is the last day to register with Thrivent for attending the Member Meeting. It will be a fun evening.

## **A GREENER APPROACH TO GIVING:**

Churches, because of their heavy weekly check volumes, need to embrace electronic giving as a way to automate contributions. Electronic giving in all its forms provides convenience for frequent check writers and donation consistency for churches.

A less frequently discussed benefit of electronic giving is its positive impact on the environment. An enormous amount of natural resources are consumed in the production, transportation, processing and disposal of paper checks. That's why paying bills electronically always ranks high on any list of actions an individual can take to improve the environment.

As you consider the payment method you use to make your regular offering, we hope that you will think about the unique connection between financial stewardship and environmental stewardship. Visit our website at: [chapelofthecrosslutheran.org](http://chapelofthecrosslutheran.org). Scroll down to the lower left side of our home page and click on the "online giving" button for more information or to sign up. Don't have access to the Internet? Contact the church office 636.928.5885

## **Four More at TEN**

The Board of Youth and Education would like to recognize the following students for attending Sunday School TEN times this school year: Jonathan AuBuchon, Pete Duffy, Owen Napolitano, and Sasha Sam (Thompson). CONGRATULATIONS! We would like to thank their parents for bringing them to Sunday School.

**HOUSING NEEDED:** A low income couple with one 8 year old son is in need of housing. If you are aware of a place where the rent is low, can you please call 636-387-3683.

## **NEXT CULVER'S NIGHT**

**Mon APR 2**

On Monday April 2nd, the youth will be hosting another Culver's night as a fundraiser for our mission trip. Please come out and support the youth if you are able! We'll be at the Culver's located at 2750 Muegge Rd, St Charles from 5-10pm.

## **LWML SPRING ZONE RALLY in Troy**

**APR 14  
Register by APR 1**

All ladies are invited to the LWML Spring Rally on April 14th to be held at Trinity Lutheran Church in Troy. Info and directions are on the bulletin board in the Coffee Shoppe.



## LWML CHAPEL CIRCLE MEETING

APR 17

The brown bag lunch hour will be hosted by Jo Scheer and Judy Wiegand. Jo Scheer will also provide the devotion. Our program will be presented by our guest speaker, Mrs. Shauna Thompson. Please join us as we will be learning about the "Women of India". **We will meet in the New Education Wing, in Room A** for lunch at noon followed by our guest speaker and meeting at 1:00 p.m.

## KEENager News

APR 19

On Thursday, April 19<sup>th</sup> at 9 a.m. we will take a trip to visit the Alive exhibit of Marianist Brother Mel Meyer's work. After lunch we will tour the Lutheran International Center at 1 p.m.

As always, anyone 55 or older may join us for fun and fellowship!

Call Paul Ludy @ 636-278-3881 with questions or to get on the list. Thanks.

## CHAPEL MEN'S LEAGUE SOFTBALL

It's just around the corner. Please sign up if you are wanting to play this year. The sign up sheet will be in the Coffee Shoppe. The games will be on Saturdays usually starting in April or May. I hope to have a practice in place before our first game. The cost will be determined by how many players we have. Please give me a call, text, or email if you have any questions. Thanks and hope to see you out there. Duane : 636-399-4954 : daek7780@yahoo.com

## OTHER ANNOUNCEMENTS

(SEE BULLETIN BOARD FOR FURTHER INFO ON ANY EMPLOYMENT OPPORTUNITIES/AREA EVENTS)

### DEAR CHAPEL FAMILY

Please could we ask you to notify the church office of

### ANY EMPLOYMENT OPPORTUNITES

that you hear of so that we may share this information with our members. Thank you.

- **EMPLOYMENT OPPORTUNITY:** Food service jobs at Busch Stadium, see the website for more information: [http://www.sportservicebusch.com/index\\_jobs.html](http://www.sportservicebusch.com/index_jobs.html)
- **EMPLOYMENT OPPORTUNITY:** Financial Asset Management Systems (located at 70 Corporate Hills Pkwy, St Charles) is in the process of expanding and looking for close to 100 people to fill those positions. Call Jay Hollowood at 636-925-5300 or 877-539-3913.

## DID YOU KNOW ???

**PRAYER CHAIN:** Do you wish to have the Prayer Chain started for yourself or a loved one? Please call Marion Harris at 636-922-1278 or Ruth Koeneman at 636-916-3507. You are always welcome to join us as a Prayer Partner of the Prayer Chain.

**MEALS OF LOVE:** Are you, or someone you know, in need of a meal due to sickness or just coming home from the hospital. Please call Kim Harnagel at 939-6927 to arrange for a **Meal of Love** to be delivered to your home. **This is not affiliated or associated with “Meals on Wheels”.** “Meals of Love” are members of Chapel helping out fellow members. They provide up to four meals per illness/occurrence. If you wish to help make meals, please also call Kim.

**Memorial Cards, Portals of Prayer & Prayer Booklets** are located in the Narthex in the Info Rack.

**Mail Tubs** are located on the credenza in the hall—outside the offices.

**Application for Facility Use** forms are located in the Mail Tubs. Please complete and submit to the Church Office when making your request.

**Lost & Found** is in a box in the cloak room to the left of the narthex. Items will be kept for one month, and if not claimed, will be donated to Goodwill. Thanks for helping to keep our church clutter-free.

**CDs** of our Sunday Service are available upon request – please call church office.

**Doodle Bags** are hanging on the wood post in the narthex and are for your child's enjoyment during the church service. **PARENTS:** Please see that the bags get returned to the blue tub in the narthex at the end of the worship service. Thank you!

**Want a ride to church??** Chapel's bus service is up & running!! Please call the church office (928-5885) by 11am on the Thursday prior to the Sunday that you wish to be driven to church. **If you are an “on-going” rider & will be going out of town,** please let us know that you will not need to be picked up. Chapel is blessed to be able to provide this special ministry.

**Pink Prayer Folder – We Need Your Help!!** Please review the names of your family members and friends listed in the pink prayer folder and kindly inform the church office of any changes. If at any time a name is removed and you know that person is in need of continued prayers, please be sure to let us know. Thanks for you help.

**‘Chapel Scrip’!!** Need a gift card?? We offer gift cards for groceries, restaurants, clothing, home improvements, travel, electronics and much more. Stop by our counter in the Coffee Shoppe to see the great selection of cards available for you to buy today, or you can use our convenient order form to order as needed. If you can't be there on a Sunday morning but would like to order gift cards, please feel free to call us (Roger and Lisa Kutschkau) at (636) 926-0986. All proceeds go to help Chapel's Future Church Workers!!

Please submit your articles for **WHAT'S HAPPENING BY 12 NOON ON WEDS**

Send to [office@chapelofthecrosslutheran.org](mailto:office@chapelofthecrosslutheran.org)

## THIS WEEK AT CHAPEL

<p><b>FEED MY SHEEP SUNDAY: 25</b>  <b>8:00AM Worship Service</b>            9:00AM Coffee in Coffee Shoppe            9:00AM Library open 'til 10:45AM            9:25AM Sun. Sch. Opening / FH                Cherub Choir/Handbells            9:35AM Bible Studies <i>see page 2</i>                New Mbr Orientation            9:30AM Chapel Scrip/Coffee Shoppe  <b>10:45AM Worship Service</b>            11:45AM Chapel Scrip/Coffee Shoppe                Noon Coffee Shoppe in use            6:00PM AI-A Rm13</p>	<p><b>MONDAY 26</b>            12:00PM Keenager Bowling            5:30PM VB in FH (BF)  <b>7:00PM Worship Service</b></p>	<p><b>TUESDAY 27</b>            9:30AM Ladies' Tues AM                Bible Study Rm13            5:00PM Martial Arts            6:00PM Zumba Fitness in Gym            6:00PM Daisies RmD (MB '12)            7:00PM Chapel Bells            7:15PM Martial Arts</p>
<p><b>WEDNESDAY 28</b>            6:30AM Bible Study at Bob Evans            9:30AM Quilt Tacking in LLL            7:30PM VB/FH (BF)              6:00PM Soup Supper  <b>7:00PM Mid-Week Lent Service</b>                - hymn sing at 6:45</p>	<p><b>THURSDAY 29</b>            1:00PM Crochet Class ConfRm            5:00PM Martial Arts            6:00PM Zumba Fitness in Gym            7:00PM Adult Choir Rehearsal            7:15PM Martial Arts</p>	<p><b>FRIDAY 30</b>            5:30PM VB in FH (BF)</p>
<p><b>SATURDAY: 31</b>            9:00AM Zumba Fitness in Gym            9:45AM AA Rm13 (10:15-11:15)</p>	<p><b>PALM SUNDAY: 1</b>  <b>8:00AM Communion Service</b>            9:00AM Coffee in Coffee Shoppe            9:25AM Opening Devotion / FH            9:35AM Sun. Sch/Bible Studies  <b>10:45AM Communion Service</b>                <b>New Mbrs Rec'd '12</b>            6:00PM AI-A Rm12</p>	<div style="border: 1px solid black; padding: 10px; margin-top: 20px;"> <p><b>KEY:</b>  <b>CS</b>-Coffee Shoppe  <b>FH</b>-Fellowship Hall/                Gym  <b>LLL</b>-Lower Level                Lobby  <b>S</b>-Sanctuary  <b>DD</b>-Daniel's Den</p> </div>

**WORSHIP ASSISTANTS**

<b>WEEK Beginning Sunday, March 25</b>		<b>WEEK Beginning Sunday, April 1</b>	
<b>GREETERS:</b>	8:00 Gary & Marge Urban	<b>GREETERS:</b>	8:00 Gary & Marge Urban
	10:45 Marty & Kim Macke		10:45 Marty & Kim Macke
<b>ACOLYTES:</b>	8:00 Emil Clausing	<b>ACOLYTES:</b>	8:00 Emil Clausing
	10:45 Jordyn Seavert		10:45 Jordyn Seavert
<b>NURSERY:</b>	Karrin Nettles	<b>NURSERY:</b>	Karrin Nettles
<b>USHERS:</b>	8:00 Richard Matt*, Kellee Matt, Sheryl Munz, Dennis Guyott, Al Ross, & Dee Krieger	<b>USHERS:</b>	<b>8:00</b> Richard Matt*, Kellee Matt, Sheryl Munz, Dennis Guyott, Al Ross, & Dee Krieger
	10:45 Bill Hiner*, Cornel Savala, Wade McKee, Bryan Hulse, Alex Savala, Kara Brooks, Adam Brooks & Nic Savala		10:45 Bill Hiner*, Cornel Savala, Wade McKee, Bryan Hulse, Alex Savala, Kara Brooks, Adam Brooks & Nic Savala
	10:45 Subs Linda & Ralph Williams		
	Mon Al Riley & Jeremy Brown		
<b>ELDER ON DUTY:</b>	Riedemann	<b>ELDER ON DUTY:</b>	Dave Riedermann
<b>TRUSTEE:</b>	Lee Sir	<b>TRUSTEE:</b>	Lee Sir
<b>COUNTERS:</b>	John Middendorf, Leon Heitgerd, Rachelle Lilge, Phyllis Richoz	<b>COUNTERS:</b>	Bob & Jacquie VanGilder Stephanie VanGilder MaryAnn Ronan, Jack Muckey

**SERVICE** 8:00  
**COORD:** 10:45 Ruby Kramer

**ALTAR GUILD for Mar:** Ginny Guyott  
Pat Middendorf  
Mathilda Reinhardt

Mon: Susan Meyer, Ruth Conant

**COFFEE HOSTESS for Mar:** Duane & Debbie Theilen

**BULLETIN FOLDERS:** Bob Renken, Ruby Kramer, Betty Choate, Diane Klos, Kathy Mortenson, Marlene Singleton, Gladys Smart, Phyllis Richoz, Bev Cossey