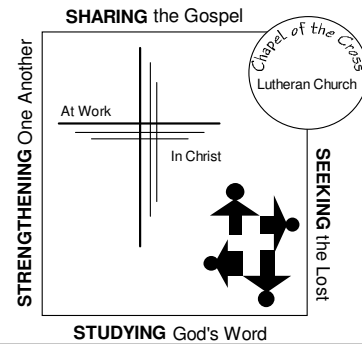


What's Happening at  
Chapel of the Cross Lutheran Church  
March 18<sup>th</sup> 2012

WE WELCOME LIVING WORD  
LUTHERAN HIGH SCHOOL  
A Cappella Choir & Concert Band



**THIS WEEK AT CHAPEL**  
see page 15

**WELCOME to Chapel of the Cross!**

If you are visiting today, please introduce yourself and be sure to sign our **GUEST REGISTER** located in the Narthex and the **burgundy FELLOWSHIP BOOK** which is passed along the pew during the offering.

**COFFEE** is served from 9:00-9:30am in the Coffee Shoppe.

A **NURSERY** is available from 9:25am until the end of the late service.

The Nursery is located in the Family Room.

A **FAMILY ROOM** is also available where you may hear and view the service in comfort if you feel your children are restless. The Family Room is located off of the Coffee Shoppe.

Our **LIBRARY** is open from 9:00am-10:45am

Our **OFFICE HOURS** are: Monday through Friday; 9:00am-4:30pm. You may reach us by

**PHONE** at 636-928-5885 or **FAX** at 636-926-3421 or

**EMAIL:** [office@chapelofthecrosslutheran.org](mailto:office@chapelofthecrosslutheran.org)

Don't forget to visit our **website** at: <http://chapelofthecrosslutheran.org>

**PASTORAL CARE:**

**Do you need Pastoral Care or have an emergency requiring pastoral assistance?**

Life can sometimes bring struggles our way. If you or a member of your family are experiencing some of life's difficulties, our Pastors are here for you, whether it be personal, family, work or church related struggles.

The Pastors may be reached at the church office 636-928-5885 or at the following numbers:

Pastor Hoehner 636-922-2774; Pastor Uglum 636-577-7539.

Your **Elders** are also available for you. Please see page 4.

PLEASE NOTE: if you are scheduled for tests or surgery, or any need where you would like the Pastor to be present, **please call the church office** so that this may be arranged.

**Friendly Reminder:** Pastor Hoehner takes Fridays for a day off, and Pastor Uglum takes Thursdays, but of course, our Pastors are always on call for emergencies.

**PRAYER REQUESTS:** Do you have a specific prayer request? If so, please feel free to fill out a prayer card. Please hand it to the usher prior to the start of service.

## OUR BIBLE STUDIES

### Sun: **JOIN US FOR ADULT BIBLE CLASSES AT 9:35 A.M.**

Brighten up the gloomy month of February by joining us for one of our Bible studies:

1. **1 Kings – with Pastor Hoehner** in the upper level of the new education wing. This study begins where we left off. David is still the king of Israel, but he is dying. So who will be the next king, and how will he rule God's people? Come and find out and see how God raises up Jedi prophets like Elijah and Elisha to call God's people to a faithful relationship with Him.
2. **Christian Basics with Pastor James** in the upper level of the new education wing. Are you curious to know more about the Christian faith or know someone who is, or do you want to be confirmed in the Lutheran Christian faith? Come study the 6 basic teachings of God's love, salvation, and purpose for your life.
3. **The Women's Beth Moore Study** of the Book of Acts led by Anita Clausing in the lower level of the new education wing.

**High School Youth** meet in Daniel's Den with Chris and Stephanie Kollmann. All our youth are welcomed and encouraged to bring a friend.

**Children:** We have an awesome **Sunday School** staff which provides loving, biblical, Christ-centered teaching for all ages. Our Sunday School begins at age three and goes through 8<sup>th</sup> grade.

**Note: All Sunday classes will begin promptly at 9:35 a.m.**

Parents can drop off their children to their Sunday School Teacher in the Gymnasium at 9:25 a.m. The teachers will make sure they get to class. Parents are also welcome to stay for the opening if they wish. The Cherub Choir and Handbells will continue to meet immediately after the opening.

**Mon: Little Lambs' Story Hour** for Chapel's preschool aged youth will be held on the second Monday of each month (except in April) during the school year. We will meet at 9:30 am in the preschool classroom. We will learn about God's love for us as we read Bible stories based on Adam, Adam, What Do You See? There will be a craft and a snack, as well as time to visit Chapel's Andrew Pelley Library. Contact Liz Riedemann (636-447-2427 or riedemann5@charter.net) if you and your child are planning to attend the Story Hour.

**Tues: Ladies' Tuesday Morning Bible Study:** Please join us at 9:30am on the 1st & 4th Tues. The goal is that through in-depth personal and group study of scripture we will grow in our personal faith in Jesus Christ, enjoy fellowship with members of His body, and reach out in love to others in witness and service. If you have questions please **contact Linda Little at 636-272-2701.**

**Weds: Early Morning Bible Study** with Bob VanGilder at 6:30am at Bob Evans on Mid Rivers Mall Dr near the Mall. Our current topic is 'A Study of Ephesians'. For more information, call Bob VanGilder 314-650-2053.

## **MID-WEEK LENTEN WORSHIP**

Join us on Wednesdays when we will gather for worship under the theme "Voices." In this series we will hear voices of our culture in dialogue with the voices from our confession of faith.

As always we gather for Soup Supper at 6p.m. and then the hymn sing at 6:45 p.m. and then a 30 minute devotional worship at 7p.m. It is a great time to get re-connected to your Savior, or to connect a friend or family member to Jesus so invite your friends and family to join us!

You are invited to bring a soup or dessert to share.

The host groups for our Lent Soup Suppers (in charge of set-up and kitchen) are as follows—Thank you for your service!:

March 21      Sunday School Teachers

March 28      ~~Greeters~~ Church Ushers

**Sat: Men's Bible Study** We meet the 2<sup>nd</sup> & 4<sup>th</sup> Saturdays of the month from 7:30am – 9:00am in Room 13 on the lower level. A light breakfast is served at 7:30am with our study beginning at 8:00am. Any questions? Call Butch Schleicher at 946-3681. NOTE: On Feb 11 we will begin a new study on 1 & 2 Thessalonians where we will learn about the power of the Word of God; the importance of living a God-pleasing life; and the reason why we are faithful to the Bible's teachings

### DAILY BIBLE READINGS for 2 yr. Reading Plan

*(may be started at any time)*

*"Today's Light" Bible is available from CPH. Daily readings are accompanied by study notes.*

MAR 18:	NUMBERS 9-10	MAR 21:	NUMBERS 16-18
MAR 19:	NUMBERS 11-12	MAR 22:	NUMBERS 19-20
MAR 20:	NUMBERS 13-15	MAR 23:	NUMBERS 21-35

## Chapel's ELDERS are there for You

As a member of Chapel of the Cross, you have a person working for you whose duties are to "Be shepherds of God's flock that is under your care" (1 Peter 5:2) If you have questions, concerns, or if you or someone you love are simply having difficulties and aren't sure if you need pastoral care, please pick up the phone and call your elder.

If your last name begins with:	Your Elder is:	Contact Number:
C	Chris Becker	636-288-3664
G, T-Tho	Doug Broste	636-734-2077
A, R	Wyatt Gross	636-459-5496
S-She	Dan HeideImeyer	636-240-1951
H	Allen Herbst	636-240-4527
Ti-Tu, W	Martin Koeneman	636-916-3507
F, I, N, O, Q	Dan Kroehnke	636-397-0860
Shr-Sw	John Lomax	636-695-3036
M-Men, Z	Richard Minasian	636-447-5354
B-Be, D	Dave Riedemann	636-447-2427
K, X, Y	Doug Seifert	636-278-2782
Bi-By	Duane Theilen	636-387-3683
J, P, U	Bob VanGilder	314-650-2053
E, Mey-My	Doug White	314-541-8500
L, V	Justin Yockey	314-973-6618

The Elder Chairman is Wade McKee 636-928-3699.

### CHAPEL'S FIRST FRUITS OF FAITH

Income: Weekend of Mar 11, 2012	This week	Yr to Date	'11 YTD
Budgeted Income Required:	\$ 13,298.08	\$ 146,278.88	—
<b>Actual Budget Funds:</b>	\$ 14,023.16	\$ 148,516.95	\$ 140,347.19
Electronic Giving (included in line above)	\$ 1,355.00	\$ 4,543.00	
<b>Abundant Giving:</b>	\$ 527.50	\$ 11,265.50	
<b>Attendance: Week 11</b>	<b>'12 Actual</b> 431	<b>'12 Wkly Ave</b> 512	<b>'11 Actual</b> 542
			<b>'11 Wkly Ave</b> 524

*"And they did not do as we expected, but they gave themselves first to the Lord and then to us in keeping with God's will."*  
2 Corinthians 8:5

## **CHAPEL YOUTH HAPPENINGS:**

**SR HIGH:**

**WEDS NIGHT FELLOWSHIP 6:00PM-7:30PM**

**SUNDAYS 9:30AM – IN DANIEL’S DEN**

### **YOUTH GOING TO CITY MUSEUM**

On Saturday March 31st, the youth will be going to the City Museum in downtown St. Louis. Explore enchanted caves, climb into treetops, run around Monstro-City, view the world's largest pencil, and so much more! The cost is \$13. We will meet at church at noon and be back around 5:00 pm. We are still looking for chaperones/drivers so if you are interested, please let Chris or Stephanie know (914-325-7145).

### **2012 HIGH SCHOOL GRADUATING SENIORS**

How do you feel about the color orange? Is orange your color? If so, consider being a part of the **Orange Nation** and .....serving at the 2013 NYG in San Antonio? See Liz Riedemann for details! (636-447-2427 or riedemann5@charter.net)

**JR. HIGH :**

**CONFIRMATION!**

**Meets again on Wed Apr 11<sup>th</sup>**

**6<sup>th</sup>, 7<sup>th</sup>, and 8<sup>th</sup> Graders: Meet at 6:20pm** – go straight to class.

### **ATTENTION PARENTS OF 8TH GRADE CONFIRMANDS**

**TODAY—Sun, Mar 18**

Please remember that Peggy Clemens and Barb Biggers will be in the COFFEE SHOPPE collecting all forms and monies on the following two days only:

Wednesday, March 14<sup>th</sup> from 6:30-7:00pm between soup supper and Lenten service

Sunday, March 18<sup>th</sup> from 9:00-10:30am between early and late services

These are your only 2 opportunities to take care of this business. If you will NOT be at either of these, please contact Peggy Clemens (636.397.4496) PRIOR to March 18<sup>th</sup>, as all reservations and orders will be placed that evening.

## WORSHIP SCHEDULE FOR LENT, HOLY WEEK AND EASTER

7:00PM MID-WEEK LENT SERVICE  
Mar 21, 28

Soup Supper 6:00PM—Hymn Sing 6:45PM

### **PALM SUNDAY, Apr 1**

Communion Service at  
8:00AM & 10:45AM

### **MAUNDY THURSDAY, Apr 5**

7:00PM Communion Service

### **GOOD FRIDAY, Apr 6**

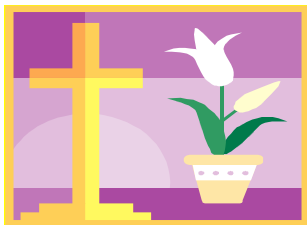
Worship Service at  
11:00AM & 7:00PM

### **EASTER SUNDAY, Apr 8**

Sunrise Service at 6:00AM  
*(Holy Communion will still be celebrated  
but in a somewhat simpler style of  
service)*

Holy Communion will also be  
celebrated at 8:00AM & 10:45AM

Chapel's Youth will serve breakfast from  
7:00AM-10:30AM



(Proceeds  
from the  
breakfast will  
go towards  
this year's  
Mission Trip)

## **OTHER CHAPEL ANNOUNCEMENTS**

### **NEW MEMBER ORIENTATION March 25<sup>th</sup>**

Orientation will be held on SUNDAY, March 25<sup>th</sup> at 9:35am. The Orientation is for those who are transferring to Chapel of the Cross from other congregations, those who are reaffirming their faith and those who have attended the recent Christian Basics class.

### **NEW MEMBERS RECEIVED April 1<sup>st</sup>**

New Members to Chapel will be received on SUNDAY, April 1<sup>st</sup> at the 10:45am services. **All those who are planning on becoming Members, would you please be sure to let the Church Office know.** (928-5885) Thank You!!

ALL Members are invited to our  
**“Coffee & Cake Reception”**  
which will be held on Sunday, April 1<sup>st</sup> at  
9:35am in the Coffee Shoppe

**Working on your taxes?  
CONTRIBUTION STATEMENTS are in the Coffee Shoppe**

**NEXT WEEK IS FEED MY SHEEP SUNDAY!**

Dear Chapel Family, the 4th Sun of each month is 'Feed My Sheep' Sunday at Chapel when we support OASIS—our local food pantry. Obviously all donations of non-perishable food (no glass containers please), paper products, personal hygiene products, and baby diapers and gratefully accepted, but here are a few of the most needed items:

Peanut Butter 18oz, Grape Jelly 32oz, Canned Fruit 15oz, Canned Beef Stew 24oz.

**Four More at TEN**

The Board of Youth and Education would like to recognize the following students for attending Sunday School TEN times this school year: Jonathan AuBuchon, Pete Duffy, Owen Napolitano, and Sasha Sam (Thompson). CONGRATULATIONS! We would like to thank their parents for bringing them to Sunday School.

**HOUSING NEEDED:** A low income couple with one 8 year old son is in need of housing. If you are aware of a place where the rent is low, can you please call 636-387-3683.

**LIVING WORD LUTHERAN HIGH SCHOOL A Cappella Choir &  
Concert Band .....COMING TO CHAPEL ! TODAY —MAR 18**

Be sure to join us at 8:00 or 10:45am on Sunday, Mar 18 when our worship will be enhanced by Living Word Lutheran High School A Cappella Choir & Concert Band from Jackson, WI

**CHAPEL CIRCLE'S ANNUAL PRAYER SERVICE & SALAD SUPPER** **MAR 20**

Please invite a friend or two and your neighbor to join us for this very special evening of prayer and fellowship. The Prayer service is based on the acronym P.R.A.Y.E.R. – Praise, Remember, Ask, Yield, Excitement, Rejoice! To find out more bring a salad, your neighbor and friends and join us. You won't be sorry!

**CLAUSINGS IN CONCERT** **MAR 24**

Pastor and Mrs. Jon Clausung will present a concert at 6:30pm on Saturday, March 24 in the Chapel of the Cross sanctuary. Several area musicians will join them for a set of Christ-centered songs played on stringed instruments. Their new CD, *Touch My Lips*, will also be available. All are invited, and admission is free. If you are unable to join us on the 24<sup>th</sup>, you can download Pastor Clausung's music at iTunes, type in Jonathan Clausung.

**NEXT CULVER'S NIGHT** **Mon APR 2**

On Monday April 2nd, the youth will be hosting another Culver's night as a fundraiser for our mission trip. Please come out and support the youth if you are able! We'll be at the Culver's located at 2750 Muegge Rd, St Charles from 5-10pm.

**LWML SPRING ZONE RALLY in Troy** **APR 14**  
**Register by APR 1**

All ladies are invited to the LWML Spring Rally on April 14th to be held at Trinity Lutheran Church in Troy. Info and directions are on the bulletin board in the Coffee Shoppe.

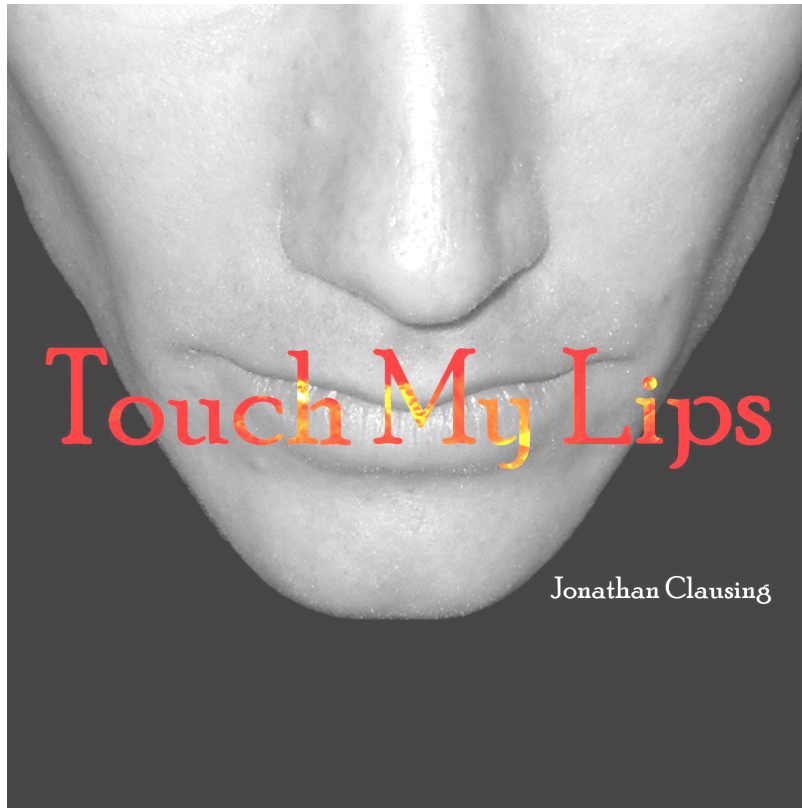
**KEENager News** **APR 19**

On Thursday, April 19<sup>th</sup> at 9 a.m. we will take a trip to visit the Alive exhibit of Marianist Brother Mel Meyer's work. After lunch we will tour the Lutheran International Center at 1 p.m.

As always, anyone 55 or older may join us for fun and fellowship!

Call Paul Ludy @ 636-278-3881 with questions or to get on the list. Thanks.





## **CLAUSINGS IN CONCERT**

**SATURDAY, MARCH 24 AT 6:30PM**  
**in the Chapel of the Cross sanctuary**

**Pastor and Mrs. Jon Clausing will present a concert together with several area musicians. Join them for a set of Christ-centered songs played on stringed instruments. Their new CD, *Touch My Lips*, will also be available.**

**All are invited, and admission is free.**

## **CHAPEL MEN'S LEAGUE SOFTBALL**

It's just around the corner. Please sign up if you are wanting to play this year. The sign up sheet will be in the Coffee Shoppe. The games will be on Saturdays usually starting in April or May. I hope to have a practice in place before our first game. The cost will be determined by how many players we have. Please give me a call, text, or email if you have any questions. Thanks and hope to see you out there. Duane : 636-399-4954 : daek7780@yahoo.com

## **EMAIL BROADCAST OF URGENT MESSAGES**

Dear Chapel Family: If you would like to receive urgent/time sensitive messages which are occasionally sent out from the church office (such as funeral arrangements for members), do please contact us by sending an email entitled 'Church Messages' to office@chapelofthecrosslutheran.org and we will be happy to include you in future mailings. Any questions, feel free to call the church office at 636-928-5885.

## **OTHER ANNOUNCEMENTS**

(SEE BULLETIN BOARD FOR FURTHER INFO ON ANY EMPLOYMENT OPPORTUNITIES/AREA EVENTS)

### **DEAR CHAPEL FAMILY**

Please could we ask you to notify the church office of

### **ANY EMPLOYMENT OPPORTUNITES**

that you hear of so that we may share this information with our members. Thank you.

- **EMPLOYMENT OPPORTUNITY:** Food service jobs at Busch Stadium, see the website for more information: [http://www.sportservicebusch.com/index\\_jobs.html](http://www.sportservicebusch.com/index_jobs.html)
- **EMPLOYMENT OPPORTUNITY:** Financial Asset Management Systems (located at 70 Corporate Hills Pkwy, St Charles) is in the process of expanding and looking for close to 100 people to fill those positions. Call Jay Hollowood at 636-925-5300 or 877-539-3913.

- **LHS NEWS**

The Lutheran Junior Cougar Football team will be having sign-ups for the 2012 season on Monday, March 19 at the Lutheran High School library at 6:30 pm. We will again field two teams: comprised of 6th, 7th, and 8th graders (fall of 2012). If you have any questions, please contact the head football coach at LHS, Matt Marty, at (314) 541-8823 or [marty@lhssc.org](mailto:marty@lhssc.org).

Are you an 8th grader who loves to dance? Or a sophomore that missed tryouts last year? Come try out to be a LHS pommer! You don't have to dance in a studio or have perfect technique, all levels of dancers are welcome! Come dressed and ready to dance, please wear a form fitting top and shorts or dance pants. Please wear dance shoes if you have them. Any questions? Feel free to call Ashley 314-497-7315 or Corinne 314-322-6526. Tryouts will be held March 28th-30th from 3:30 - 5:00 pm in the Lutheran High Gymnasium.

Did you order a 2011 Lutheran High Pom Clinic Dvd? If you ordered a dvd and did not receive it, please contact Ashley at [adesign.lunn@yahoo.com](mailto:adesign.lunn@yahoo.com). They were mailed months ago but we just found out that some people did not receive them! We will be happy to bring you a new dvd and leave it in your child's school office. thank you!

- **CELEBRATE YOUR THRIVENT MEMBERSHIP AT THE FOX!**

Join us for the **2012 Member Meeting** and get a live, in-person update from Thrivent Financial CEO Brad Hewitt about the state of the organization in one of America's most magnificent venues. Learn more about the membership benefits available to you and enjoy: Musical entertainment; A reception with hors d'oeuvres; Backstage tours of the historic Fox and more! Thurs, April 19, starting at 6 p.m., Fabulous Fox Theatre, 527 N. Grand Blvd., St. Louis, MO 63103. Register by March 30: [Thrivent.com/membermeeting](http://Thrivent.com/membermeeting)

See flyer and sign up sheet on bulletin board in Coffee Shoppe

- **ZION LUTHERAN SCHOOL AUCTION:** Growing In Grace—Giving In Gratitude. Mark your calendars for Friday, March 30. Zion will hold their annual Dinner & Silent Auction from 5-10pm at The Columns. You are invited to stop by the table in the Coffee Shoppe to learn more!

- **MUSIC AT ZION:** Popular Christian singer and songwriter, Andrew Peterson, will present a concert called *Counting Stars* at Zion Lutheran Church today, Sun, Mar 18, at 6pm. See flyer or call 636-441-7425.

- **ANNUAL EASTER BASKET COLLECTION**

Zion's 7<sup>th</sup> grade Cadette Girl Scouts are gathering items and assembling Easter Baskets for the children of Concordia Seminary students and patients of Laclede Groves Care Center. This project will help us earn our Girl Scout Silver Award. Our goal is to donate 200 baskets to the Seminary and 25 baskets to Laclede Groves Care Center. We need your help filling baskets with donations of following items:

- Baby items: jar food, cereal, bibs, baby toy, socks
- Activity/coloring books for all ages
- Small toys, books, balls, cars, bubbles, etc
- Plastic eggs, baskets, wrapped Easter Candy
- Small stuffed animals, \$5 - \$10 gift cards
- Purse size Kleenex, puzzle books
- Chocolate Cross

Donations will be accepted through March 23 and the delivery is planned for April 1<sup>st</sup>. If you have any questions about needed items, please call Hannah Ballard, Sara Dobrinic, or Kaitlin Trimble at (636) 926-7703 or email at [susantrimble@att.net](mailto:susantrimble@att.net).

- **Spring is coming and it's time to think GOLF!** The **Lutheran High School Golf Tournament** will be held at Bear Creek Golf Course on Sunday afternoon, April 29th. The 4-person scramble begins with a shotgun start at 1:30 and includes 18 holes of golf and a barbecue dinner. Registration forms can be downloaded from the LHS webpage at [www.lhssc.org](http://www.lhssc.org).

- **LATEST NEWS FROM LUTHERAN HIGH SCHOOL:** check out the bulletin board.

- **HELPING HANDS FREE DENTISTRY DAY, Sat APR 7** : In order to help those without dental insurance, free cleanings, extractions and fillings will be given to adults 18 and older on Sat, Apr 7 between 7:30am and 5pm at Heritage Dental Group located at 4045 North St Peters Parkway, Ste 200 in St Peters. For more information, please call 636-441-3466. No appointments will be taken; patients will be accepted on a first come first served basis.

- **"LADIES NIGHT OUT"** to be hosted by Immanuel Lutheran Church in St. Charles on Tuesday, March 27th. The speaker will be Courtney Doctor, speaking on "Contentment - Don't Settle for Less." Registration is required by March 18th—to register, contact Immanuel at 636-946-2656 and ask for Debbie Hendricks.
- **ISSUES, ETC.** is a radio talk show hosted by LCMS Pastor Todd Wilken and produced by Lutheran Public Radio. You can listen LIVE weekdays from 4-5 p.m. on KSIV, 1320 AM in St. Louis. You can also listen to what you want when you want at [www.issuesetc.org](http://www.issuesetc.org).

## DID YOU KNOW ???

**PRAYER CHAIN:** Do you wish to have the Prayer Chain started for yourself or a loved one? Please call Marion Harris at 636-922-1278 or Ruth Koeneman at 636-916-3507. You are always welcome to join us as a Prayer Partner of the Prayer Chain.

**MEALS OF LOVE:** Are you, or someone you know, in need of a meal due to sickness or just coming home from the hospital. Please call Kim Harnagel at 939-6927 to arrange for a **Meal of Love** to be delivered to your home. **This is not affiliated or associated with “Meals on Wheels”.** “Meals of Love” are members of Chapel helping out fellow members. They provide up to four meals per illness/occurrence. If you wish to help make meals, please also call Kim.

**Memorial Cards, Portals of Prayer & Prayer Booklets** are located in the Narthex in the Info Rack.

**Mail Tubs** are located on the credenza in the hall—outside the offices.

**Application for Facility Use** forms are located in the Mail Tubs. Please complete and submit to the Church Office when making your request.

**Lost & Found** is in a box in the cloak room to the left of the narthex. Items will be kept for one month, and if not claimed, will be donated to Goodwill. Thanks for helping to keep our church clutter-free.

**CDs** of our Sunday Service are available upon request – please call church office.

**Doodle Bags** are hanging on the wood post in the narthex and are for your child's enjoyment during the church service. **PARENTS:** Please see that the bags get returned to the blue tub in the narthex at the end of the worship service. Thank you!

**Want a ride to church??** Chapel's bus service is up & running!! Please call the church office (928-5885) by 11am on the Thursday prior to the Sunday that you wish to be driven to church. **If you are an “on-going” rider & will be going out of town,** please let us know that you will not need to be picked up. Chapel is blessed to be able to provide this special ministry.

**Pink Prayer Folder – We Need Your Help!!** Please review the names of your family members and friends listed in the pink prayer folder and kindly inform the church office of any changes. If at any time a name is removed and you know that person is in need of continued prayers, please be sure to let us know. Thanks for you help.

**‘Chapel Scrip’!!** Need a gift card?? We offer gift cards for groceries, restaurants, clothing, home improvements, travel, electronics and much more. Stop by our counter in the Coffee Shoppe to see the great selection of cards available for you to buy today, or you can use our convenient order form to order as needed. If you can't be there on a Sunday morning but would like to order gift cards, please feel free to call us (Roger and Lisa Kutschkau) at (636) 926-0986. All proceeds go to help Chapel's Future Church Workers!!

Please submit your articles for **WHAT'S HAPPENING BY 12 NOON ON WEDS**

Send to [office@chapelofthecrosslutheran.org](mailto:office@chapelofthecrosslutheran.org)

## THIS WEEK AT CHAPEL

<p><b>SUNDAY: 18</b>  <b>8:00AM Communion Service</b>            9:00AM Coffee in Coffee Shoppe            9:00AM Library open 'til 10:45AM            9:25AM Sun. Sch. Opening / FH                    Cherub Choir/Handbells            9:35AM Bible Studies <i>see page 2</i>            9:30AM Chapel Scrip/Coffee Shoppe  <b>10:45AM Communion Service</b>            11:45AM Chapel Scrip/Coffee Shoppe            6:00PM AI-A Rm13</p>	<p><b>MONDAY 19</b>            10:00AM Mom &amp; Me in FH            12:00PM Keenager Bowling            5:30PM VB in FH (BF)            7:00PM Kitchen Cleaning '12  <b>7:00PM Communion Service</b>            7:00PM Financial Ctrl Bd/ConfRm</p>	<p><b>TUESDAY 20</b>            6:00PM LWML Salad Supper FH            7:00PM LWML Prayer Service            7:00PM Trustees Rm 10</p>
<p><b>WEDNESDAY 21</b>            6:30AM Bible Study at Bob Evans            7:30PM VB/FH (BF)             6:00PM Soup Supper  <b>7:00PM Mid-Week Lent Service</b>            - hymn sing at 6:45</p>	<p><b>THURSDAY 22</b>            1:00PM Crochet Class ConfRm            5:00PM Martial Arts            6:00PM Zumba Fitness in Gym            7:00PM Adult Choir Rehearsal            7:15PM Martial Arts</p>	<p><b>FRIDAY 23</b>            5:30PM VB in FH (BF)</p>
<p><b>SATURDAY: 24</b>            7:30AM Mens' Ministry in Rm13            9:00AM Zumba Fitness in Gym            9:45AM AA Rm13 (10:15-11:15)             6:30PM Clausing Concert             Help at OASIS</p>	<p><b>FEED MY SHEEP SUNDAY: 25</b>  <b>8:00AM Worship Service</b>            9:00AM Coffee in Coffee Shoppe            9:00AM Library open 'til 10:45AM            9:25AM Sun. Sch. Opening / FH                    Cherub Choir/Handbells            9:35AM Bible Studies <i>see page 2</i>                    New Mbr Orientation            9:30AM Chapel Scrip/Coffee Shoppe  <b>10:45AM Worship Service</b>            11:45AM Chapel Scrip/Coffee Shoppe                    Noon Coffee Shoppe in use            6:00PM AI-A Rm13</p>	<div style="border: 1px solid black; padding: 10px; margin-top: 20px;"> <p><b>KEY:</b>  <b>CS</b>-Coffee Shoppe  <b>FH</b>-Fellowship Hall/                    Gym  <b>LLL</b>-Lower Level                    Lobby  <b>S</b>-Sanctuary  <b>DD</b>-Daniel's Den</p> </div>

**WORSHIP ASSISTANTS**

<b>WEEK Beginning Sunday, Mar 18</b>		<b>WEEK Beginning Sunday, March 25</b>	
<b>GREETERS:</b>	8:00 Joanne Goers & Bev Cossey 10:45 Kim & Barb Woodworth	<b>GREETERS:</b>	8:00 Gary & Marge Urban 10:45 Marty & Kim Macke
<b>ACOLYTES:</b>	8:00 Megan Ruhr Adam White 10:45 Matthew Koboldt Rachel Stocker	<b>ACOLYTES:</b>	8:00 Emil Clausing 10:45 Jordyn Seavert
<b>NURSERY:</b>	Karrin Nettles	<b>NURSERY:</b>	Karrin Nettles
<b>USHERS:</b>	8:00 Mike Conant*, Bob & Joyce Gaugh, Don Sugar, Bob Jones & Kathy Wilson 10:45 Ruby Kramer*, Paul & Rosa Ludy, Dan & Rose Mary Tanner & Michael Schmidt 10:45 Subs Linda & Ralph Williams Mon Paul & Beth Standiford	<b>USHERS:</b>	8:00 Richard Matt*, Kellee Matt, Sheryl Munz, Dennis Guyott, Al Ross, & Dee Krieger 10:45 Bill Hiner*, Cornel Savala, Wade McKee, Bryan Hulsey, Alex Savala, Kara Brooks, Adam Brooks & Nic Savala 10:45 Subs Linda & Ralph Williams Mon Al Riley & Jeremy Brown
<b>ASSISTING WITH COMMUNION</b>	8:00 Elders <b>Koeneman</b> , Yockey , White, Minasian 10:45 Elders <b>Lomax</b> , Broste , VanGilder, Heidelmeyer Mon Elders <b>Miller</b>	<b>ELDER ON DUTY:</b>	Riedemann
<b>ELDER ON DUTY:</b>	Dan Heidelmeyer	<b>TRUSTEE:</b>	Lee Sir
<b>TRUSTEE:</b>	Tim Meyer	<b>COUNTERS:</b>	John Middendorf, Leon Heitgerd, Rachelle Lilge, Phyllis Richoz
<b>COUNTERS:</b>	Paul & Rosa Ludy, Bob Renken, Ruby Kramer, Mathilda Reinhardt		

**SERVICE** 8:00  
**COORD:** 10:45 Ruby Kramer  
**ALTAR GUILD** Ginny Guyott  
**for Mar:** Pat Middendorf  
 Mathilda Reinhardt  
 Mon: Susan Meyer, Ruth Conant

**COFFEE HOSTESS**  
**for Mar:** Duane & Debbie Theilen  
**BULLETIN** Bob Renken, Ruby Kramer,  
**FOLDERS:** Betty Choate, Diane Klos,  
 Kathy Mortenson, Marlene  
 Singleton, Gladys Smart,  
 Phyllis Richoz, Bev Cossey